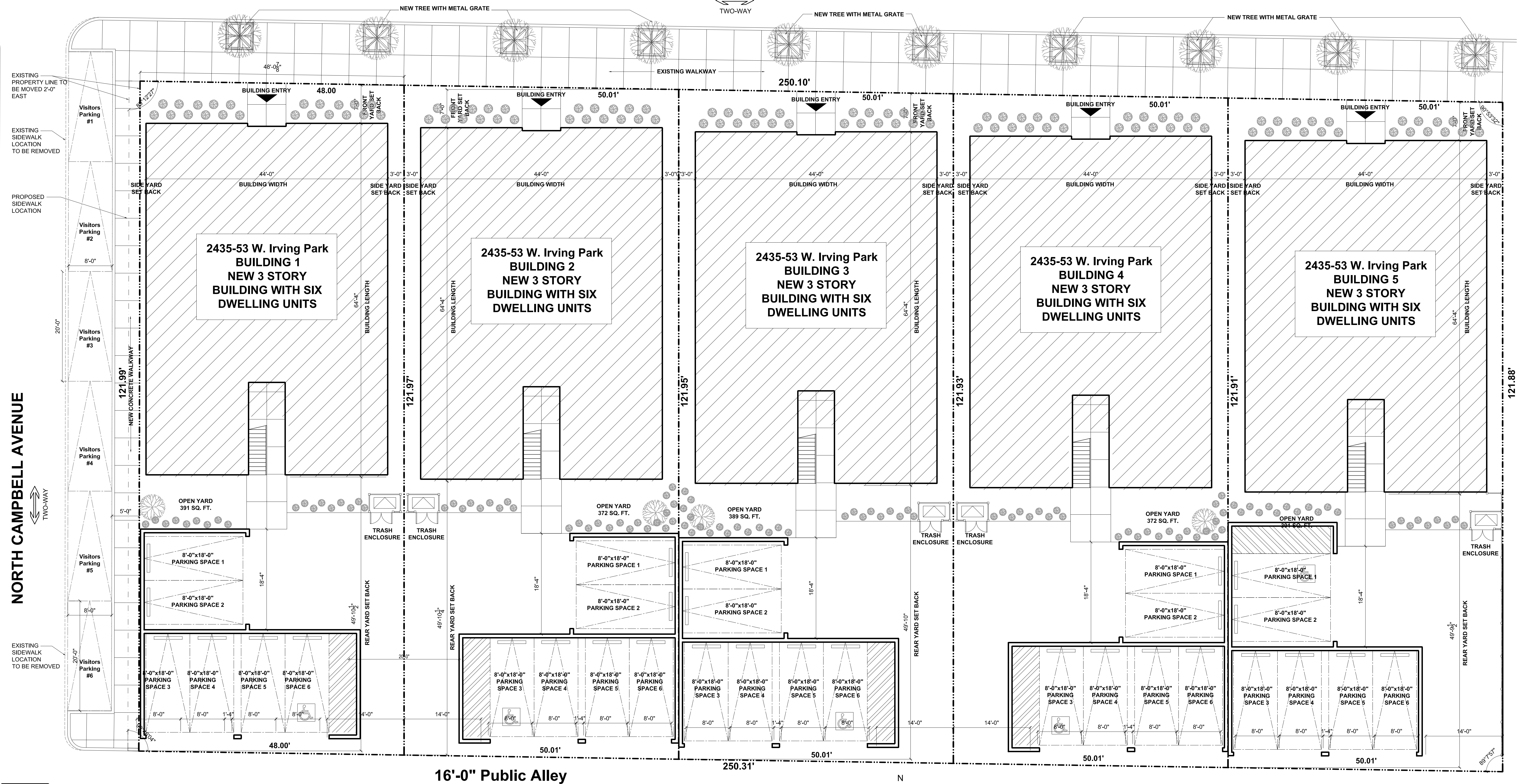


2435-53 West Irving Park Road

Chicago

Illinois

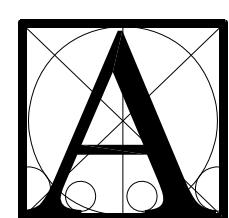
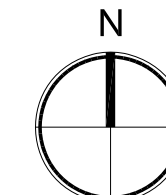
WEST IRVING PARK ROAD



16'-0" Public Alley

SITE PLAN

Scale: 1/8"=1'-0"



X I O S ARCHITECTS AND CONSULTANTS

188 N. WELLS
SUITE 300
CHICAGO, ILLINOIS 60606
PH. 312.750.1333
FAX. 312.750.1335

EXHIBIT 1
November 1st 2012