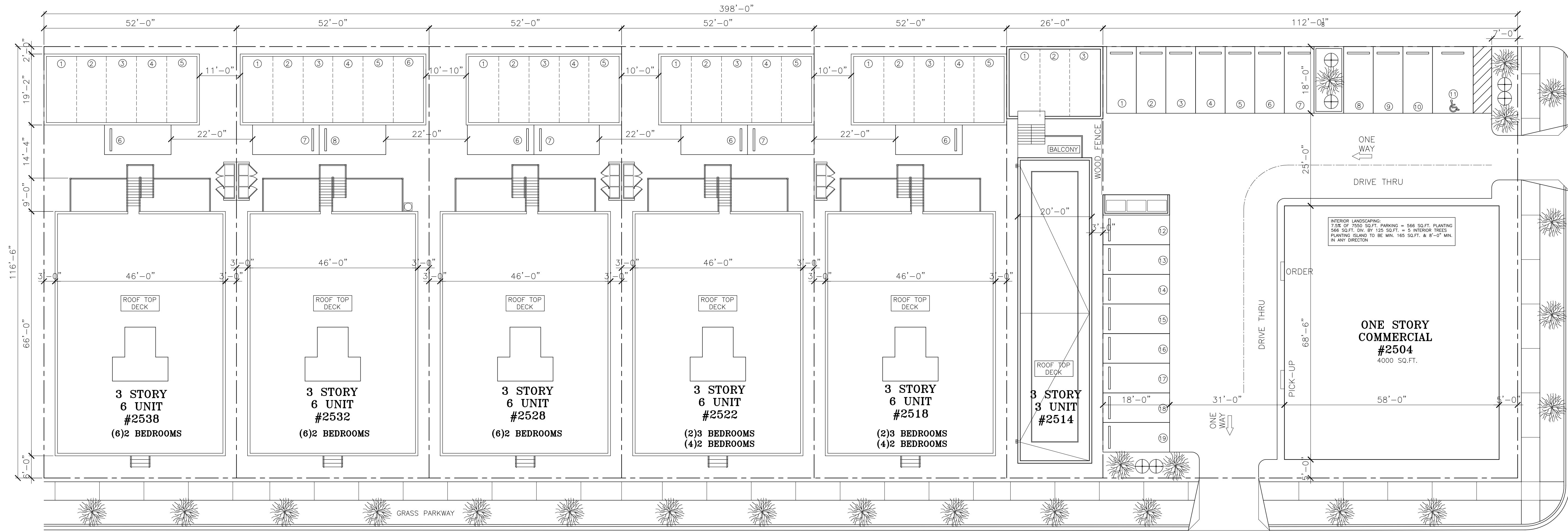


16 FT ALLEY



COMBINED SITE PLAN
SCALE: 1/16" = 1'-0"

TWO WAY
W. ADDISON ST

ZONING DATA #2518-38: (5 EACH)

LOT AREA - 52.00'x116.50' = 6,058 SQ.FT.
F.A.R. - B2-2 2.2
MAX. BUILDABLE - 13,327 SQ.FT.
BUILDING SQUARE FOOTAGE:
1ST FLOOR - 3,036.00 SQ.FT.
2ND FLOOR - 3,036.00 SQ.FT.
3RD FLOOR - 3,036.00 SQ.FT.
TOTAL = 9,108.00 SQ.FT.

ZONING DATA #2514

LOT AREA - 116.50x26.00 = 3,029 SQ.FT.
F.A.R. - B2-2 2.2
MAX. BUILDABLE - 6,663 SQ.FT.
BUILDING SQUARE FOOTAGE:
1ST FLOOR - 1,386.00 SQ.FT.
2ND FLOOR - 1,386.00 SQ.FT.
3RD FLOOR - 1,386.00 SQ.FT.
TOTAL = 4,158.00 SQ.FT.

ZONING DATA #2504

LOT AREA - 112.00x116.50 = 13,048 SQ.FT.
F.A.R. - B2-2 2.2
MAX. BUILDABLE - 28,705 SQ.FT.
BUILDING SQUARE FOOTAGE:
1ST FLOOR - 3,975.00 SQ.FT.
TOTAL = 3,975.00 SQ.FT.

TOTAL ZONING DATA

LOT AREA - 398.00' x 116.50' = 46,367 SQ.FT.
F.A.R. - 2.2
MAX. BUILDABLE - 102,007 SQ.FT.

(5) 6 UNIT BUILDINGS W/BSMT = 45,540 SQ.FT.
(1) 3 UNIT BUILDING W/BSMT = 4,158 SQ.FT.
(1) 1 STORY COMMERCIAL BUILDING W/DRIVE THRU = 3,975 SQ.FT.
TOTAL = 53,673 SQ.FT. < 102,007

RESIDENTIAL PARKING:
33 SPACES REQUIRED
37 SPACES PROVIDED

COMMERCIAL PARKING:
16 SPACE REQUIRED
19 SPACE PROVIDED



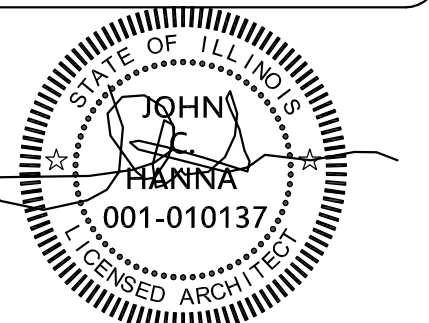
(312) 750-1800

180 W. WASHINGTON
CHICAGO, ILLINOIS 60601
FAX (312) 750-1801

PROFESSIONAL DESIGN FIRM
ARCHITECT CORPORATION
LICENSE NUMBER 184 - 001485

WARNING:
This plan Protected under Copyright
Law. Original mylar drawing on file
at the Architects' office can be
reproduced with the Architects
permission only. If someone wishes
to copy this plan; contact John Hanna
(312) 750-1800

ISSUED FOR REVIEW
ISSUED FOR REVIEW
ISSUED FOR PERMIT MARCH 27, 2015
ISSUED FOR BID
ISSUED FOR CONSTN



PROJECT NAME & ADDRESS

W. ADDISON ST
& N. CAMPBELL ST

CHICAGO, ILLINOIS

SHEET TITLE

COMBINED
SITE PLAN

FILENAME

SHEET NUMBER

A-1