

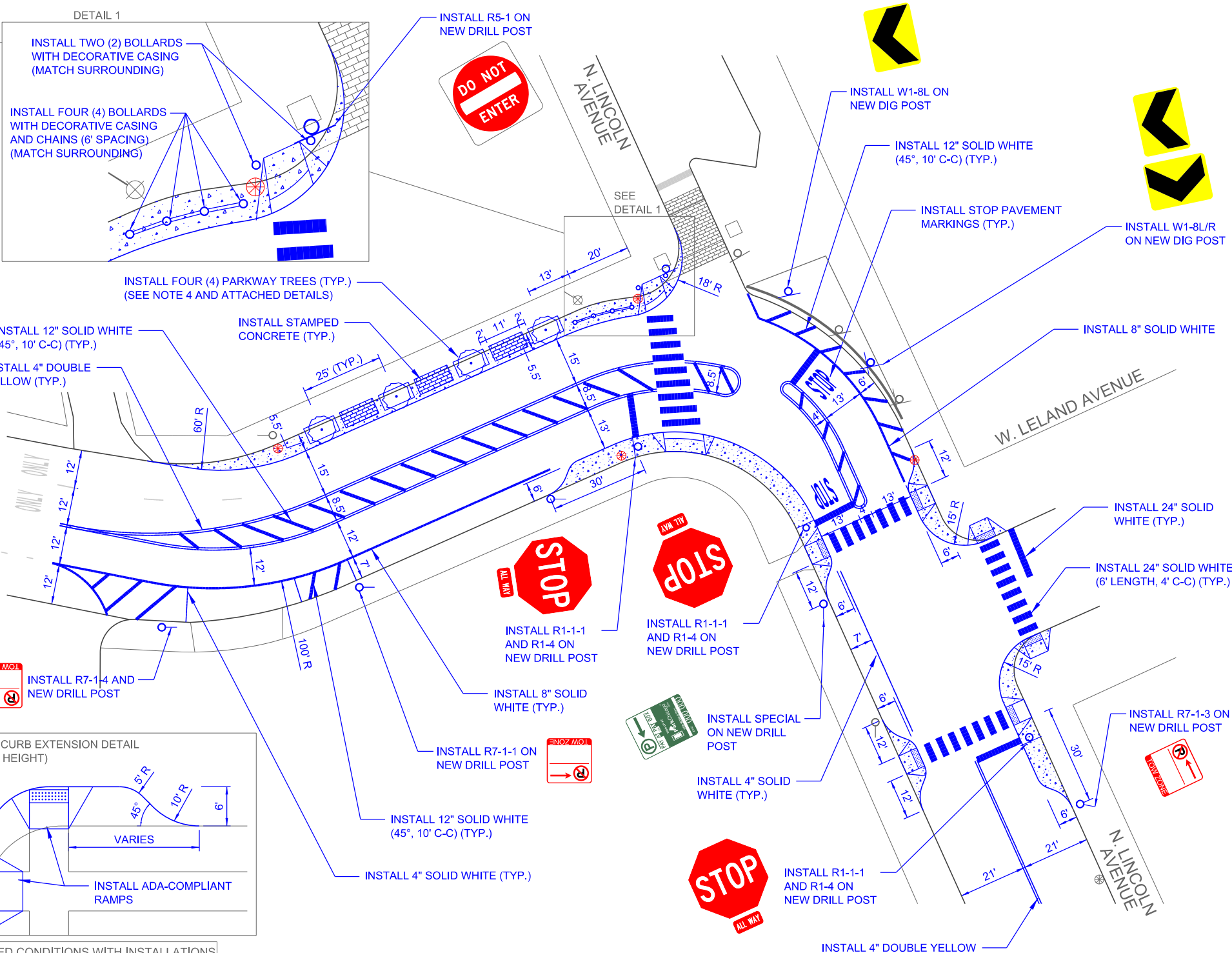
NOTES

- 1) FUNDING REQUIRED FOR ALL IMPROVEMENTS
- 2) CONCEPTUAL PLAN - NOT FOR CONSTRUCTION
- 3) TEMPORARY TRAFFIC CONTROL DEVICES TO REMAIN PRESENT FROM BEGINNING OF CONSTRUCTION THROUGH INSTALLATION OF ALL SIGNS AND PAVEMENT MARKINGS
- 4) PARKWAY TREE SPECIFICATIONS
 - 12" FROM BACK OF CURB
 - 25' SPACING BETWEEN TREES
 - 5' x 10' GRATE WITH MINIMUM 24" OPENING
 - TWO (2) 2.5'-3.0' ULMUS "PATRIOT" OR "NEW HORIZON"
 - TWO (2) 2.5'-3.0' CELTIS OCCIDENTALIS

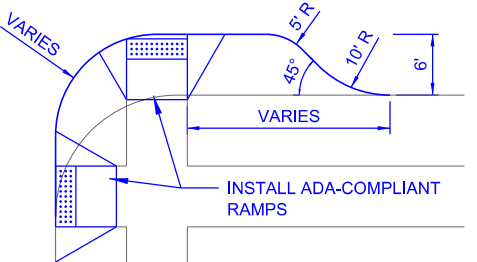
EXISTING CONDITIONS WITH REMOVALS



DETAIL 1

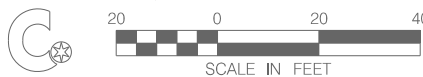


TYPICAL CURB EXTENSION DETAIL (6" CURB HEIGHT)



PROPOSED CONDITIONS WITH INSTALLATIONS

THIS DRAWING IS INTENDED TO BE PRINTED ON 11"x17" SHEETS.
FOR ALL OTHER SIZE PRINTS, USE THE SCALE BELOW TO DETERMINE LENGTH.



DRAWN BY: AF 6/30/2017
CHECKED BY: BR

PROJECT NO:

CITY OF CHICAGO
DEPARTMENT OF TRANSPORTATION
DIVISION OF PROJECT DEVELOPMENT

N. LINCOLN AVENUE & W. LELAND AVENUE
INTERSECTION IMPROVEMENTS

SCALE: 1" = 40'

SHEET NO. 1 OF 1