

**Metropolitan Water Reclamation District of Greater Chicago
Contract 10-050-3S
North Side 8 Rehabilitation, NSA**

What type of sewer work is being done in my neighborhood?

Metropolitan Water Reclamation District will be installing a new liner in the sewers known as cured-in-place-pipe (CIPP).

Why is it necessary?

Through inspection and condition assessment, Metropolitan Water Reclamation District has identified sewer pipes and structures that are deteriorated and require structural rehabilitation. In general, the sewer deterioration included fractures, missing bricks, holes, and locations where ground water is entering the sewer.

What is the duration of the project?

The project, called "North Side 8 Rehabilitation, NSA", was issued notice to proceed on October 12, 2012. The final completion date is February 16, 2014. The specific work in your neighborhood will start on _____ and will be finished on _____.

How will the project impact the neighborhood?

The CIPP liner used in the project includes a polyester resin, and the resin includes a chemical called styrene, which yields odors. Although the odor can be detected by the human nose and is a nuisance, it is at levels significantly lower than the allowable exposure limits deemed safe per Occupational Safety and Health Administration (OSHA) and National Institute for Occupational Safety and Health (NIOSH).

Further, to lessen the possibility of odors from entering your residence or business, please pour water into your floor drains, so that your traps are not dry. Additionally, it is advisable to make certain all sink traps are filled with water. For your convenience, attached is an illustration which will assist you in locating household traps.

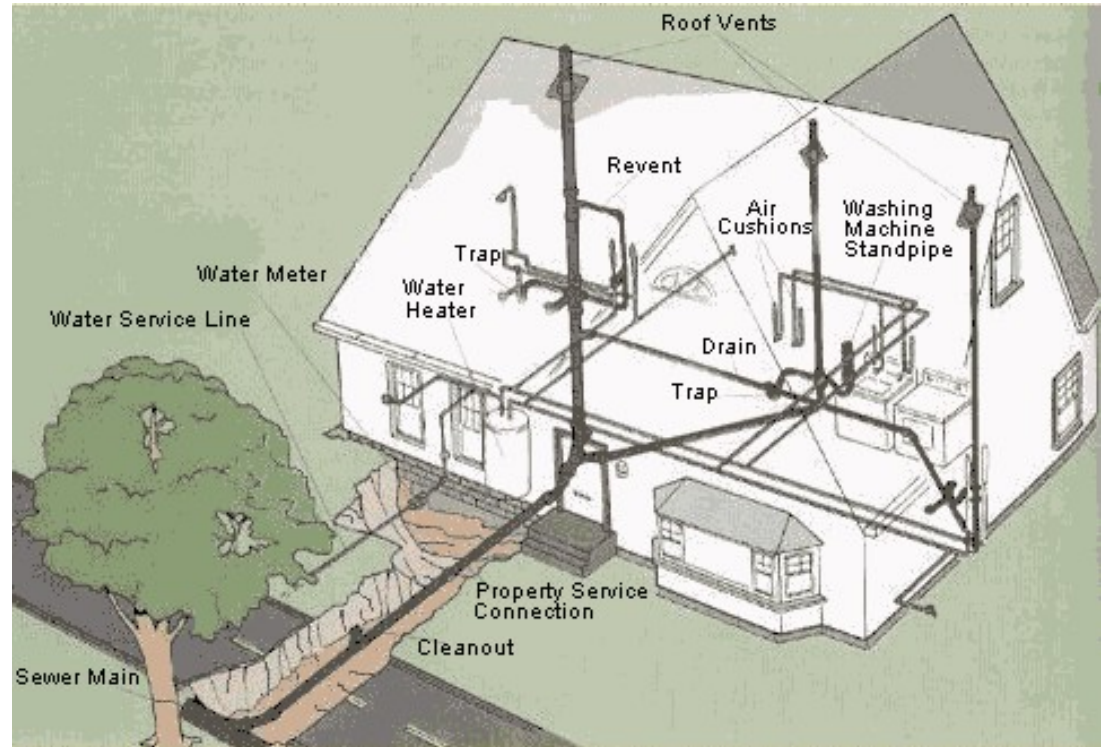
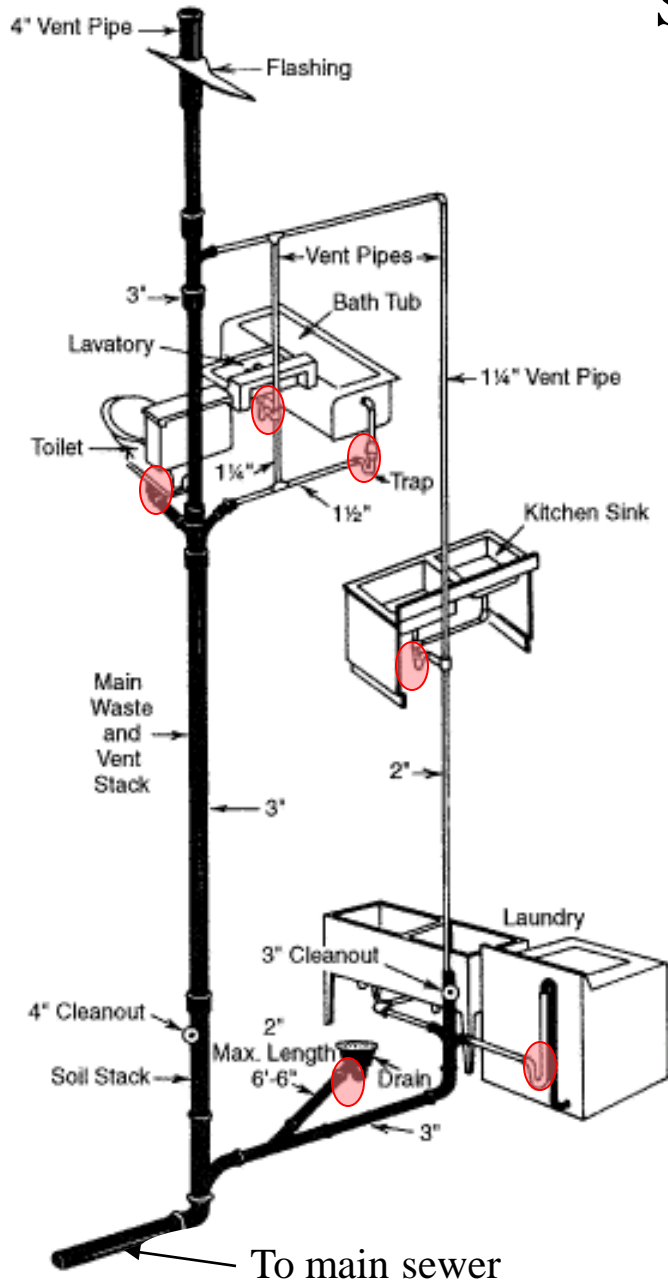
Is styrene safe?

Styrene has a **VERY** low odor threshold and can be detected by the human nose at levels as low as 0.14 ppm (parts per million), a level that is significantly lower than the current federal OSHA Permissible Exposure Limits (PELs) for styrene (100 ppm for an 8-hour TWA and 200 ppm as a ceiling not to be exceeded). Additionally, the U.S. Department of Health and Human Services has identified a Minimum Risk Levels (MRL) for styrene inhalation at 5ppm for duration of 14 days or less. This project will not exceed styrene levels beyond what is considered safe by OSHA and NIOSH. The CIPP resin material is constructed from the same type of plastic that is used in the transportation, construction, marine and clothing industries.

If I should have question about this project, who should I contact?

Spiniello Companies Project Manager, Abraham Naqeeb, (973) 210-5043 or Spiniello Companies Project Superintendent, Don Morrow, (973) 651-1806.

Sewer Traps



○ Possible locations for sewer traps



**Metropolitan Water Reclamation District of Greater Chicago
Contract 10-050-3S
North Side 8 Rehabilitation, NSA**

**PROJECT NEWSLETTER
“City of Chicago”**

Spiniello Companies has been contracted by the Metropolitan Water Reclamation District of Greater Chicago (MWRDGC) to rehabilitate the sanitary sewer system along Virginia Avenue Section and Clybourn Avenue Section in the City of Chicago.

Spiniello Companies utilizes a trenchless means of installing a new liner inside the old pipe to give new life to the sewer without the need to excavate the sewers. The sewer is to be rehabilitated by using Cured-In-Place Pipe (CIPP) lining method. This is accomplished by the installation of a resin impregnated flexible felt tube or liner into the existing sewer pipe. The curing of the new liner is accomplished by circulating hot water until the resin is converted into a hard impermeable lined pipe.

Approximately 3,266 lineal feet of the sanitary sewer concrete pipes and 8 manholes will be rehabilitated on Virginia Avenue Section. This section starts at the intersection of Lawrence Avenue and Virginia Avenue, southeast in Virginia Avenue to Sunnyside Avenue then east in Sunnyside Avenue to Rockwell Street; and then south in Rockwell Street to the intersection of Montrose Avenue and Rockwell Street.

Approximately 5,427 lineal feet of the sanitary sewer concrete pipes and 10 manholes will be rehabilitated on Clybourn Avenue Section. This section starts at the intersection of Washtenaw Avenue and Barry Avenue, east in Barry Avenue, across North Branch of Chicago River via an inverted siphon to Clybourn Avenue; and then southeast in Clybourn Avenue to the intersection of Diversey Parkway and Clybourn Avenue. This section also includes rehabilitating the two (2) siphon structures located on Barry Avenue.

The nature of our work does require us to temporarily bypass/divert the flow in the existing pipes to perform the rehabilitation. Temporary bypass/diversion Polyethylene pipes might be used and will be ran above ground. Ramps will be used so no driveways will be blocked. We will do our effort to minimize the impact to the community and will coordinate with the residents to avoid any access problems. During the rehabilitation operation, you should not experience any difficulty with your sewer lines.

Two (2) excavations will be required on Clybourn Avenue to install access shafts to facilitate the liner installation. The excavations will be covered with steel plates and full traffic control will be in place. Recognized safety practices and traffic control will be implemented at all locations to keep our workers and the public safe during all phases of the project.

You will see our equipment in the area for the next seven (7) months as we work to rehabilitate approximately 8,700 lineal feet of the sewer pipes. This work is scheduled to start on the second week of February of 2013.

Regular working hours will be from 7am to 5pm Monday through Friday unless we are in the CIPP lining installation process which requires the working hours to be around the clock Monday through Sunday until the liner is cured. Metropolitan Water Reclamation District of Greater Chicago and Spiniello Companies apologize for any inconvenience caused by construction activities.

24-hour Construction Notice will be distributed at the location where the work will commence.

When the project is done all areas will be restored and returned to their original condition.

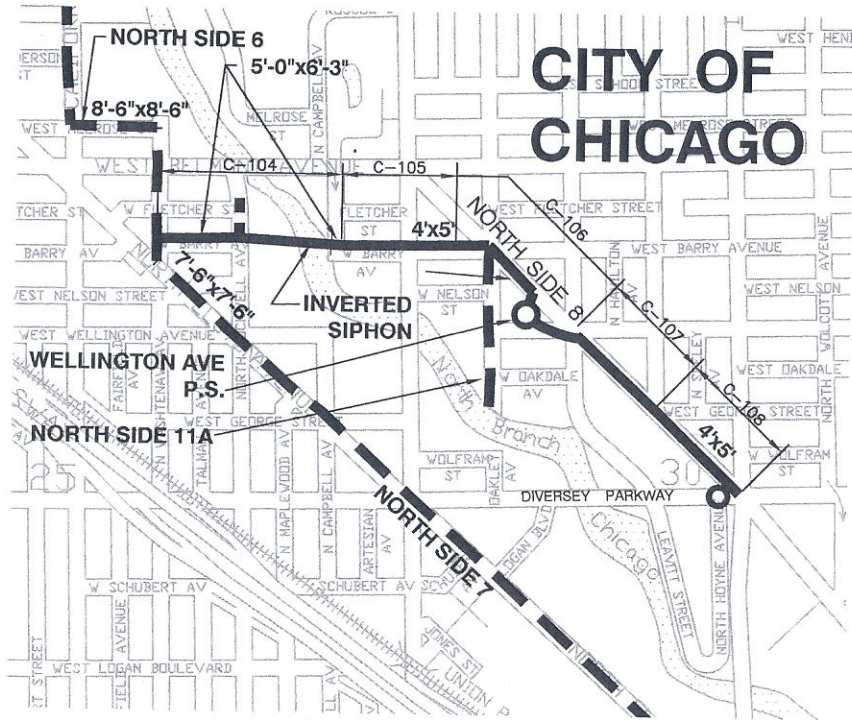
Your cooperation is requested for safe and efficient completion of the project.

If you have any questions or for more information; please feel free to contact Spiniello Companies Project Manager, Abraham Naqeeb, at 973-210-5043 or the Project Superintendent, Don Morrow, at 973-651-1806. You can also visit our website @ www.spiniello.com for more information about the CIPP lining process.

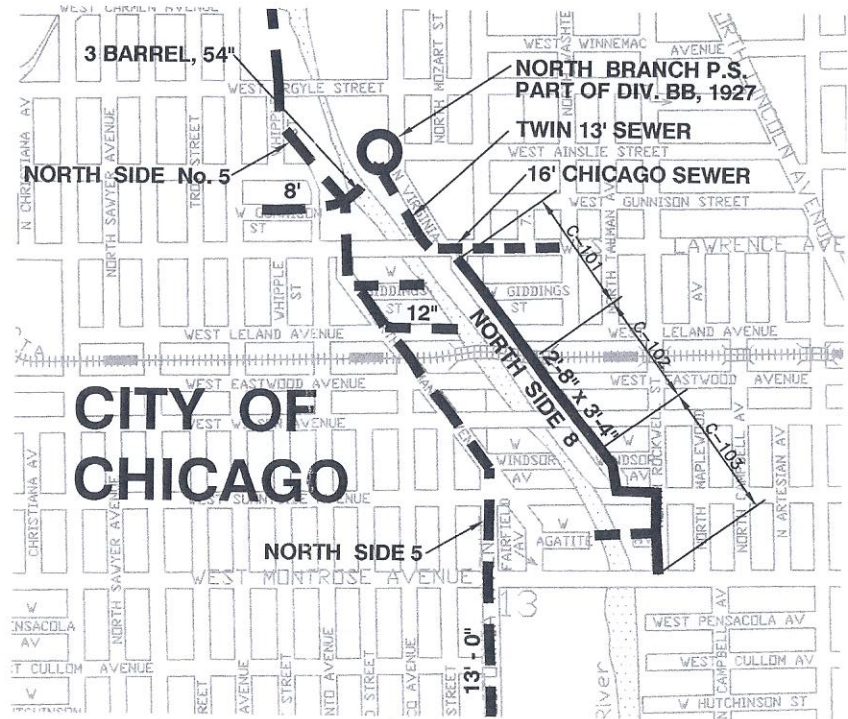
Thank you in advance for your patience and cooperation.

SPINIELLO COMPANIES





PLAN
CLYBOURN AVENUE SECTION



PLAN
VIRGINIA AVENUE SECTION