

Spring bloom:

Phlox divaricata
Aquilegia canadensis
Asclepias tuberosa
Geranium maculatum
Aronia melanocarpa

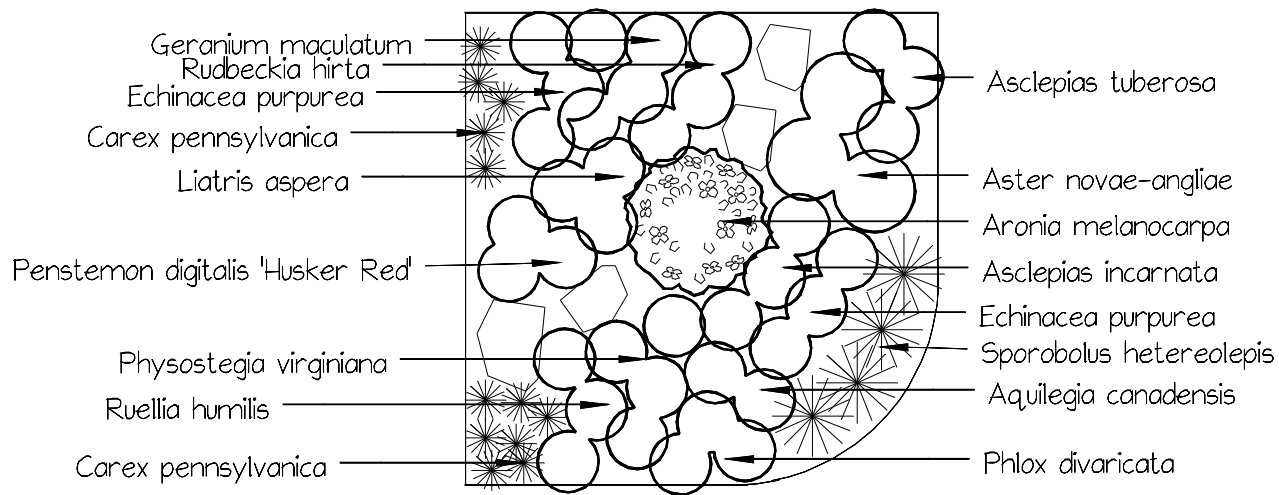
Summer bloom:

Rudbeckia hirta
Echinacea purpurea
Liatris aspera
Penstemon digitalis
Ruellia humilis
Asclepias incarnata

Fall bloom:

Aster novae-angliae
Physostegia virginiana
Sporobolus heterolepis

Proposed Planting Design
for Northcenter Neighbors
Sunny Corner
All-native Garden



Prepared by
Rinda West Designs
773-575-1205