

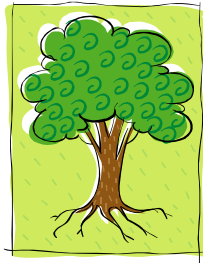
# PLEASE HELP US TO PROTECT TREES THROUGHOUT THE CITY DURING THIS PERIOD OF EXTREME DROUGHT.

**PLEASE WATER YOUR TREES TO PROTECT THEM FROM DROUGHT.**

**NOTE: EVEN IF WE RECEIVE SIGNIFICANT RAIN, CHICAGO'S TREES ARE IN WATER DEFICIT AND WILL NEED EXTRA WATER INTO THE FALL.**

## TREE CARE DURING DRY HOT WEATHER

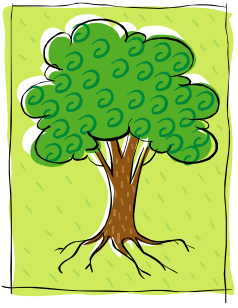
How do I know if the trees in my neighborhood are in need of water?



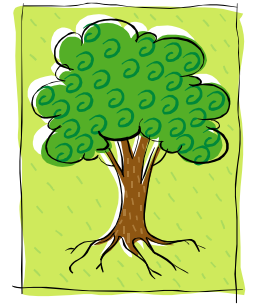
**Trees and shrubs under drought stress will show the following signs:**

- 1. Wilting during the day that does not recover by the next morning.**
- 2. Leaves that are lighter green in color than usual.**
- 3. Leaves that are scorched and browning.**
- 4. Leaf yellowing and leaf drop.**





## TIPS FOR PROTECTING TREES IN MY NEIGHBORHOOD AND WATERING WISELY DURING PERIODS OF DRY WEATHER



- ❖ **Water deeply and slowly.** Set a hose to a slow trickle over the root zone – which extends from the tree's trunk to the soil beneath the outer edges of the tree's branches. Cover as much of the root zone as possible. Using a soaker hose, a tree gator, or a tree 'donut' will allow for fewer trips out to the tree to move the hose.
- ❖ **Apply roughly 10 gallons of water for each diameter inch of the tree.** Newly transplanted and more mature trees should be watered for longer – as much as 3-4 hours a day. More mature trees have more established root systems and may not be showing signs of drought stress.
- ❖ **Do not water in the heat of the day.** Early morning is the best time to water, evening is second best.
- ❖ **Use 2-4 inches of mulch** around the base of the tree (but not touching the tree's trunk) to hold water in the soil, prevent evaporation and insulate roots from the heat.
- ❖ **Do not use watering devices that shoot water in high arcs.** Most of that water will never make it to the soil and tree roots in extremely hot conditions. It will evaporate into the air. Use a hose nozzle attachment that distributes water low to the ground.
- ❖ **Take special care of trees in pits and containers;** these are especially vulnerable as their soil heats up and dries out very quickly.

